



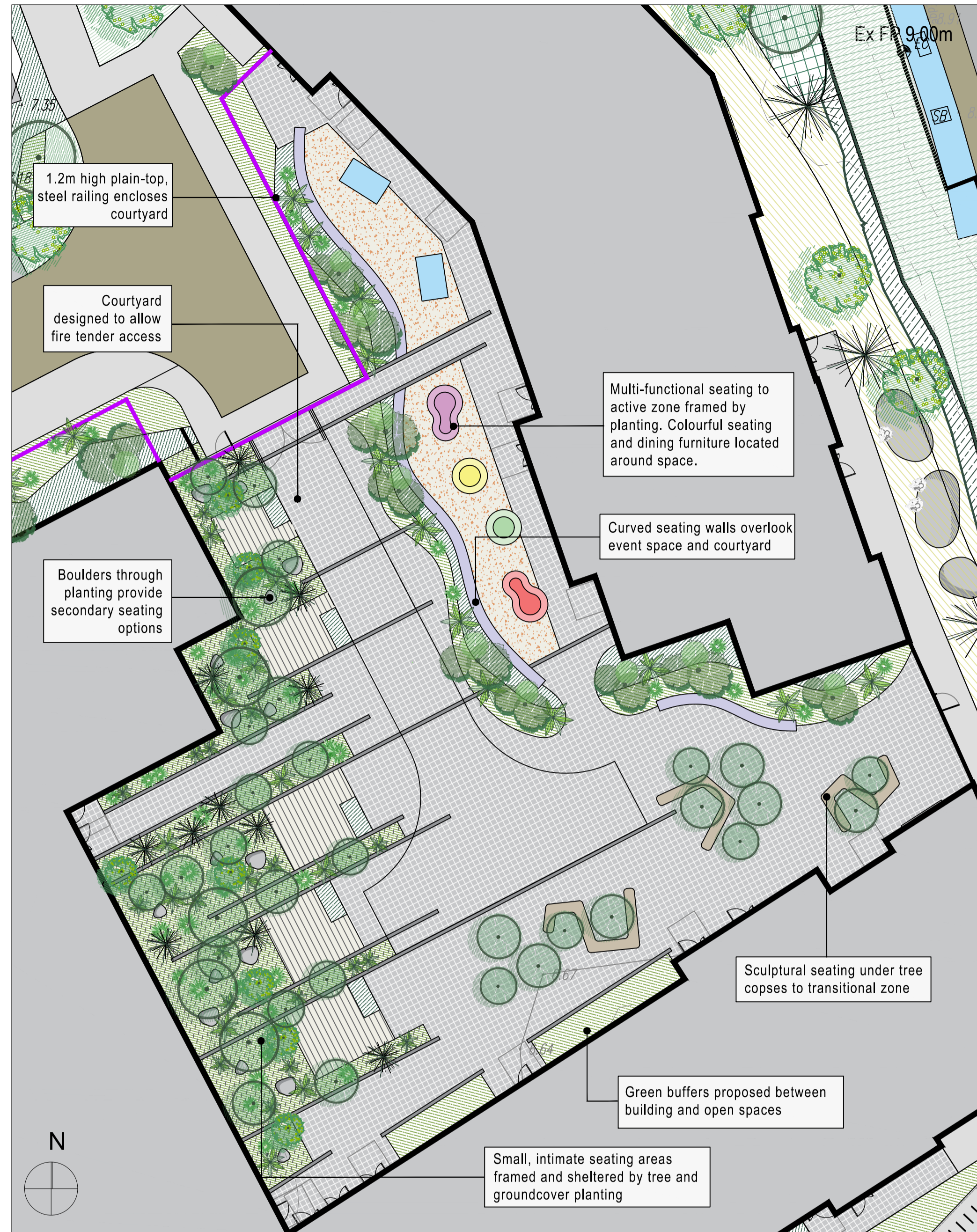
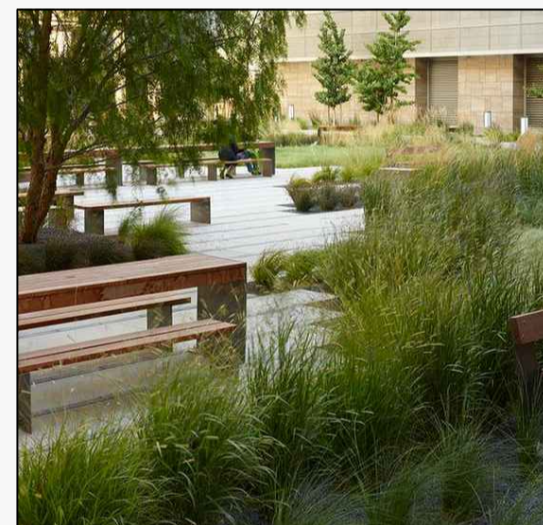
Outdoor 'Chill out' zone

Outdoor 'Chill out' rooms located along bedrooms - intended to be quieter spaces for individuals or small groups. Some spaces will be multi functional with seating and tables - others will have hammock - or small area to relax.



Native planted buffer zone

Informal native planting provides privacy and screening between chill out rooms and bedrooms.

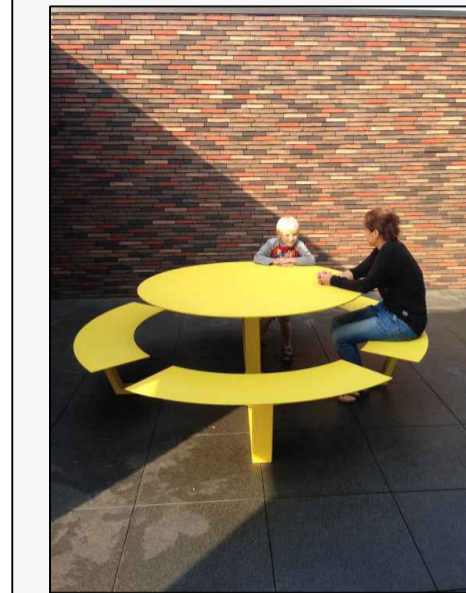


COURTYARD 1



Active zone - dining/games

More active spaces located along library/dining side of courtyard. This area is intended to be more colourful and creates space for larger or smaller groups to gather. Bold and colourful street furniture is intended for this space, with an area for outdoor games. Coloured paving defines this space and connects active zones.



Transitional seating zone

Colourful seating with tree planting creates areas to stop and gather, while maintaining a route/movement through the space



Legend and Planting List:

- Tree Planting**
To be planted as 12-14cm g, 14-16cm g and 16-18cm g
To be of the following species:
Alnus glutinosa, *Betula pendula*, *Malus sylvestris*, *Pinus sylvestris*, *Prunus avium*, *Prunus avium* 'Plena', *Prunus padus*, *Sorbus aucuparia*
- Ornamental/Multi-stemmed Tree Planting**
To be planted as 2.0-3.0m high, umbrella form
To be of the following species:
Corylus avellana, *Crataegus monogyna*, *Ligustrum vulgare*, *Prunus avium*, *Prunus avium* 'Plena', *Pyrus calleryana* 'Chanticleer'
- Grass Seeding**
Managed as an ornamental lawn.

- Bands of Ornamental Planting**
To be selected from following:
Groundcover planted at 5 per m2 in single species groups.
Herbaceous plants to be planted throughout in groups of 3, 5 and 7.
- Groundcover + Grasses**
Blechnum spican, *Briza media* 'Golden Bee', *Carex elata*, *Deschampsia cespitosa*, *Galium odoratum*, *Luzula nivea*, *Molinia caerulea*, *Osmunda regalis*, *Polystichum setiferum*
- Herbaceous Plants**
Achillea millefolium 'Moonshine', *Cirsium dissectum*, *Digitalis purpurea*, *Galium odoratum*, *Geranium* 'Johnsons Blue'
- Shrub Planting**
Cornus spp., *Euonymus europaeus*, *Ligustrum vulgare*, *Ilex aquifolium*, *Rosa canina*, *Viburnum opulus*

- Paving to courtyards**
Concrete block paving
- Paving to event spaces**
Change in colour to define space
- Paving to small seating areas**
Stone or concrete flag paving
- Paving bands to courtyards**
Concrete block paving
- In-situ concrete footpaths**
To engineers detail and specification
- Seating to small seating spaces**
- Seating and dining to events area**
- In situ concrete benches**
- Railing to courtyards**
To architects detail and specification
- Boulders through planting**
Provide secondary seating and visual interest



High quality and interesting paving throughout to both define and unify spaces

NOTE: All planting to be of native species and provenance and selected with reference to the 'All Ireland Pollinator Plan 2021-2025'

THIS DRAWING IS COPYRIGHT ©		Scale: 1:200 at A1		Status: Planning	
notes: DO NOT SCALE		Date: 24.01.25		Dim: MM, Ord: MM, Passed: MM	
		Job No: 0527		Drawing No: 101	
		Job: Whitebox Student Campus		Site: Groody Road, Castletroy, Limerick	
		Site: Detail Area - Courtyard 1		Rev: 2	
		KFLa Kennedy Fitzpatrick		4 Main Street, Raheny, Dublin 5, E: info@kfla.ie, W: www.kfla.ie	
		landscape architecture			